



ELECTROVALVES



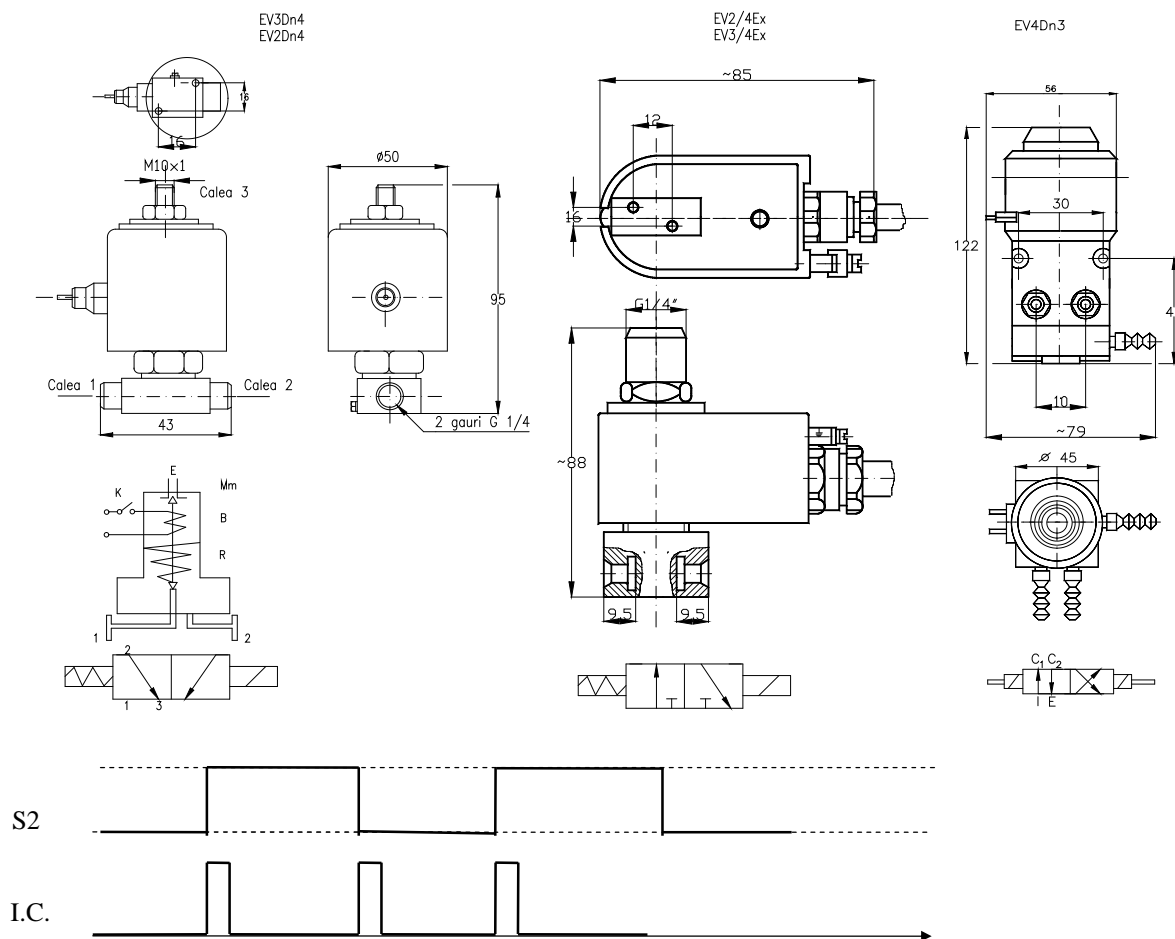
DESCRIPTION

Electrovalves made by AMCO OTOPENI are command / distribution elements with direct drive, with 2 or 3 circulation way and 2 stable positions.

By request, AMCO OTOPENI can make valves with electric pulse gating (DA 15%), with 2 stable positions and 4 circulation way EV4Dn3 type.

Work fluids could be gases or neutral filtered liquids with work pressure valves and tension drive values indicated in no 1 table.

The electrovalves are made for a normal industrial function, excepted EV2/4Ex and EV3/4Ex types, made for explosive potential medium function, according with EX e II BT 4, SR EN 50014:1995 environment medium protection.



TECHNICAL DATA

Are presented in no. 1 and no. 2 tables

ORDERING

The order will contain :

- electric type ;
- work pressure ;
- voltage supply

Electrovalves with standard normal protection :

Table 1

Type	No.	Diameter (mm)	Work pressure min/max (bar)	Supply voltage		Drive time (%)	Drive frequency (act/h)	Gauge dimensions (mm)			Type fitting	Weight (kg)	Normal standard protection	Work fluid
				Vcc	Vca			L	H	A				
EV2Dn4	2	4	0,2...6	12; 24	24; 110;	100	300	43	95	12	sleeve thread G1/4"	0,50	IP 43	gases and liquids with max. viscosity 2°E
EV3Dn4	3				220									
EV4Dn3	4	3,2	1...8	12; 24	-	15	720	56	122	29	sleeve thread M10x1	0,70	IP 43 (IP 00 terminal)	air

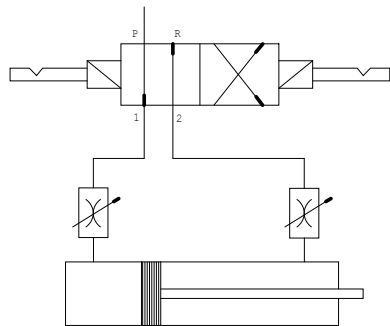
Electrovalves with standard explosion proof.

Table 2

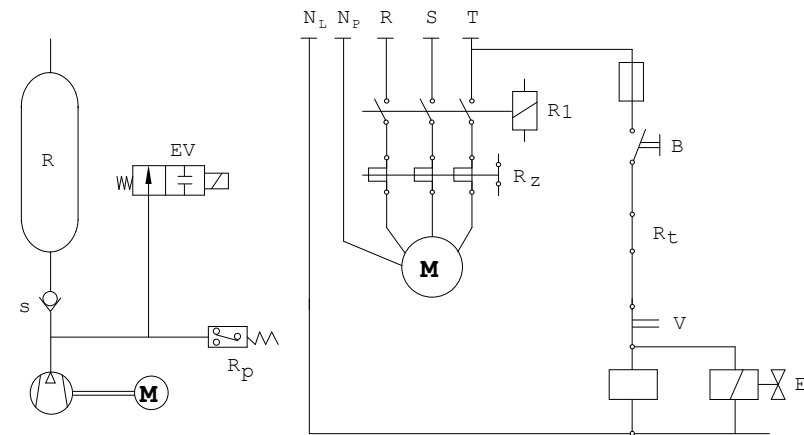
Type	No.	Diameter (mm)	Work pressure min/max (bar)	Supply voltage		Drive time (%)	Drive frequency (act/h)	Gauge dimensions (mm)			Type fitting	Weight (kg)	Normal standard protection	Worg fluid
				Vcc	Vca			L	H	A				
EV2/4Ex	2	4	6,3...16	24; 110;	24; 24;	100	600	85	88	12	sleeve thread G1/4"	1	Ex e IIT4	gases and liquids with max. viscosity max. 2°E
EV3/4Ex	3				220									

APPLICATION

The electrovalves are using in pneumatically and hydraulic automation plants (fixed / mobile). Explosion proof type is fitting to electrical network by Ex doses.



Double piston commanding by EV4Dn3 electrovalve type



The compressor started scheme